



COMPANY
WITH QUALITY MANAGEMENT
SYSTEM CERTIFIED BY DNV
=ISO 9001:2000=



panorammic

P 60.10 K

PANORAMIC 60.10 K

MODEL		P 60.10 K
WEIGHT		
Total operating weight (with forks)	kg	9.840
PERFORMANCE		
Rated maximum load	kg	6.000
Maximum lift height	mm	9.550
Maximum forward reach	mm	5.500
Lift height at full capacity	mm	7.800
Reach at full capacity	mm	1.600
Capacity at full lift height	kg	4.000
Capacity at full forward reach	kg	1.500
Tear-out force with 800 l bucket	kg	6.550
Drawbar pull	kg	7.800
Carriage rotation	deg	143
SPEED		
1 st gear	kph	15
2 nd gear	kph	40

Integral side-shift

■ Patented by Merlo, integral chassis side-shift permits lateral adjustment of the boom, for precise load placing. Unlike sideshift attachments, the integral Merlo design does not derate load capacity, or increase the effective width of the load.

■ It can be used with any attachment fitted, at any stage in the operating cycle, and does not require the use of boom end hydraulics - leaving them free for attachments!

■ Side-shift with boom extended: ± 250 mm

Frame levelling

■ Frame levelling (or 'Sway control') permits the chassis to be transversely levelled with respect to the ground. Lifting is then vertical, for both safety and maximum capacity.

■ On transverse slopes it is essential to be correctly levelled before attempting to lift and, in conjunction with boom side-shift, frame levelling ensures the best handler use in all conditions.

■ Slope correction: $\pm 10\%$.

SAFETY DEVICES

- An overload warning device activates both audible and visual signals and blocks further overloading actions.
- Automatic lock of frame levelling when boom exceeds a preset safety angle.
- All boom and hydraulic cylinders are fitted with pilot-operated check valves.
- The "Fail-safe" parking brake type automatically locks when the diesel engine is turned off.

BOOM

- Two telescopic sections, made of high yield steel, each sliding on adjustable anti-friction pads.
- The extension mechanism and hydraulic pipes are housed inside the boom to avoid any site damage.

CAB

- The high yield steel frame conforms to ROPS (ISO 3471) and FOPS (ISO 3449) standards.
- Opening front and rear windows are fitted with wash/wipe systems.
- The upper part of the two-section door can be locked in the open position for increased ventilation.
- Air conditioning is available as an option.
- Instrumentation includes: tachometer/revolution counter, hour meter, fuse box, fuel level, coolant temperature, annunciator



P 60.10 K

A	mm	5.345
B	mm	1.235
C	mm	2.875
D	mm	1.300
E	mm	4.645
F	mm	480
H	mm	2.240
M	mm	995
P	mm	2.440
R	mm	3.950
S	mm	4.970
Z	mm	850

- panel showing blocked engine air filter, hydrostatic oil level and temperature, engine oil pressure, coolant temperature, parking brake warning light.
- Boom movements are controlled with "2 in 1" joystick controls.

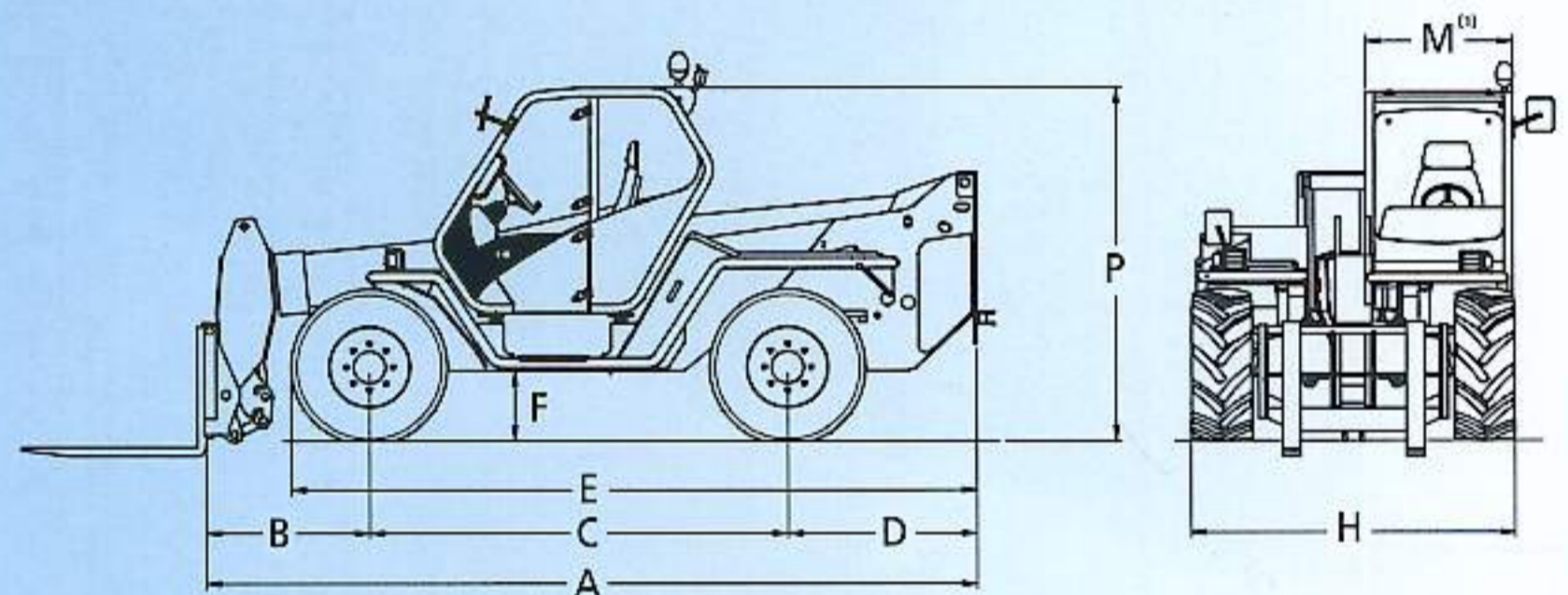
"RING OF STEEL"

The periphery of the chassis is completed by a solid high yield steel bar, providing a "Ring of Steel" as protection to the engine and fuel reservoir, and assuring good stability.

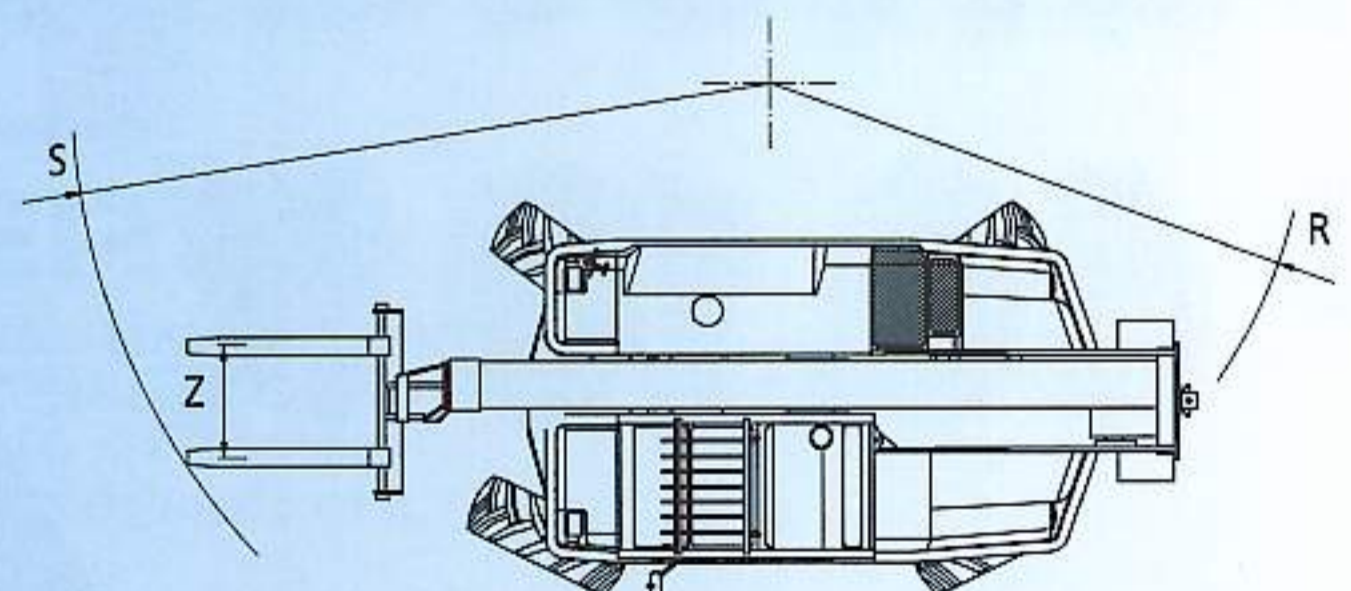
"LOAD-SENSING"

- The "Load-Sensing" hydraulic system automatically regulates pump delivery to ensure most efficient use of engine power. Pump output is automatically adjusted to suit load conditions, ensuring fast but controllable movement, and reducing power requirements.
- Variable delivery axial pistons

DIMENSIONS



OUTSTANDING MANOEUVRABILITY



⁽¹⁾ Internal width

pump with "Load-Sensing" control.
• The operating pressure is 230 bar with a maximum flow of 120 l/min.

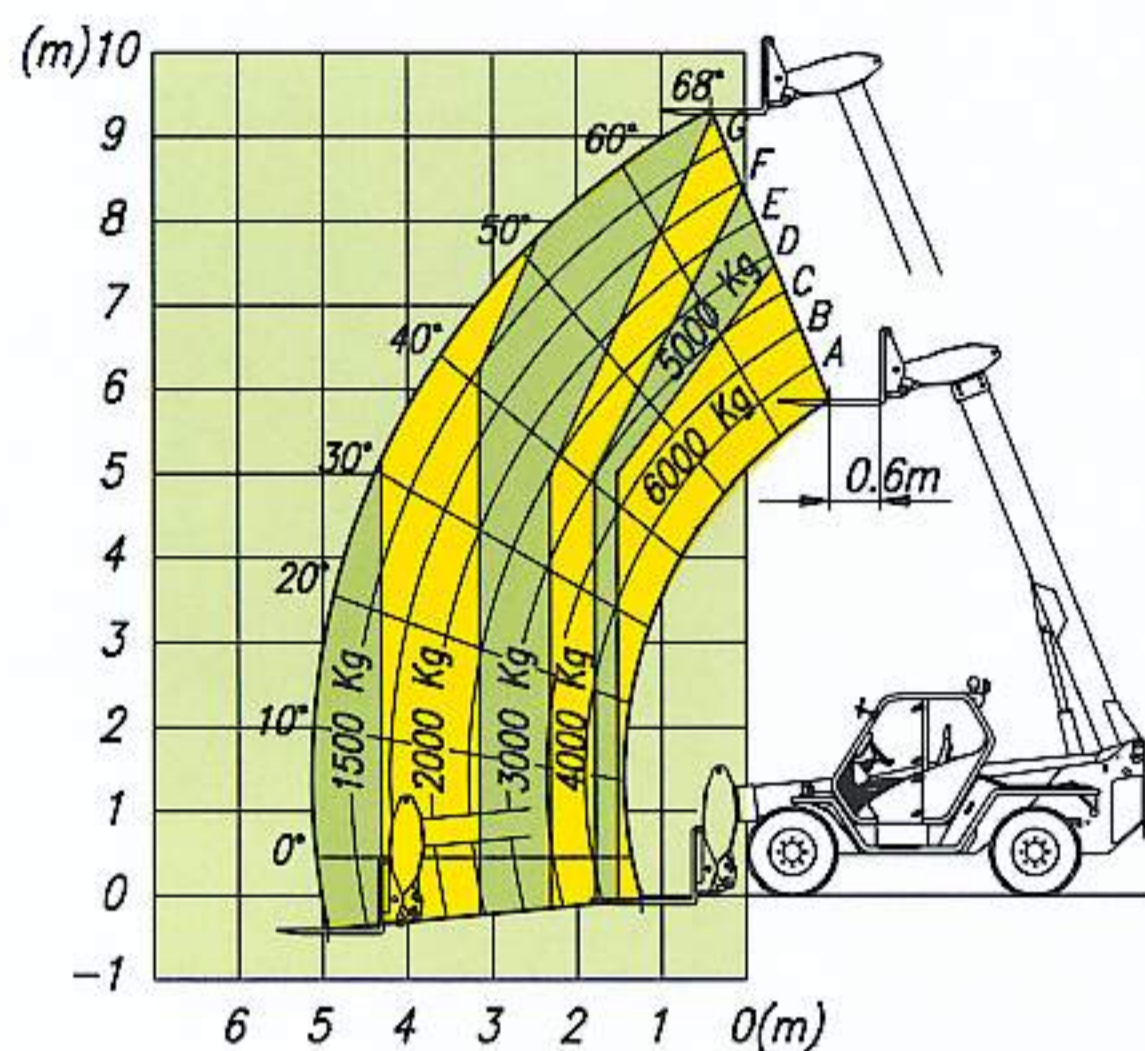
ENGINE

- The engine is located longitudinally on the right side of the chassis (Merlo patent). It is a low emission (Euro 2) 4 cylinder Perkins turbodiesel engine, with direct injection and water cooling and 74,5 kW power at 2400 rpm (97/68/CE).



PANORAMIC 60.10 K

P 60.10 K



Lift capacities at 600 mm load centre - EN1459/A



HYDROSTATIC TRANSMISSION

- The hydrostatic transmission ensures automatic and continuous speed regulation from standstill to maximum speed, simply by operating the accelerator pedal.
- The two speed range gear box is electrically operated.
- An "Inching-Control" makes it possible to precisely vary travel speed independently of engine speed.
- With the "Finger-Touch" system it is possible to change driving direction even when the machine is moving, without the operator having to remove his hands from the steering wheel.
- Permanent four-wheel drive traction, with drop portal axles to ensure excellent ground clearance.

STEERING

All four wheels are steered, with

the operator being able to select one of three steering modes. Auto-synchronisation realigns the steering wheels should they become misaligned:

- Front wheel steer.
- Four wheel steer.
- Crab steer.

CARRIAGE

- The 'Tac-Lock' quick attachment fitting system is hydraulically controlled from the cab.
- Two boom-end mounted hydraulic lines are provided, which can be combined as a single double acting service.

FORKS

- Floating type with a length of 1200mm and section 150 x 60mm.
- Centre to centre fork distances manually adjusted from between 450 up to 1050mm.

BRAKES

- Hydraulic service disc brakes are fitted to all four wheels, operating on the differential output shafts.
- A 'Fail-safe' spring-operated, hydraulic release, disc parking brake is fitted to the main transmission output shaft.

ELECTRICS

- 12V system with 100Ah battery and 65A alternator.
- Full road lighting and flashing beacon.

CAPACITIES

- Hydraulic oil: 95 l
- Diesel fuel: 155 l
- Hydrostatic oil: 12 l
- Engine oil: 8,5 l

TYRES

- 400/70-20 14PR

Internal width 995mm

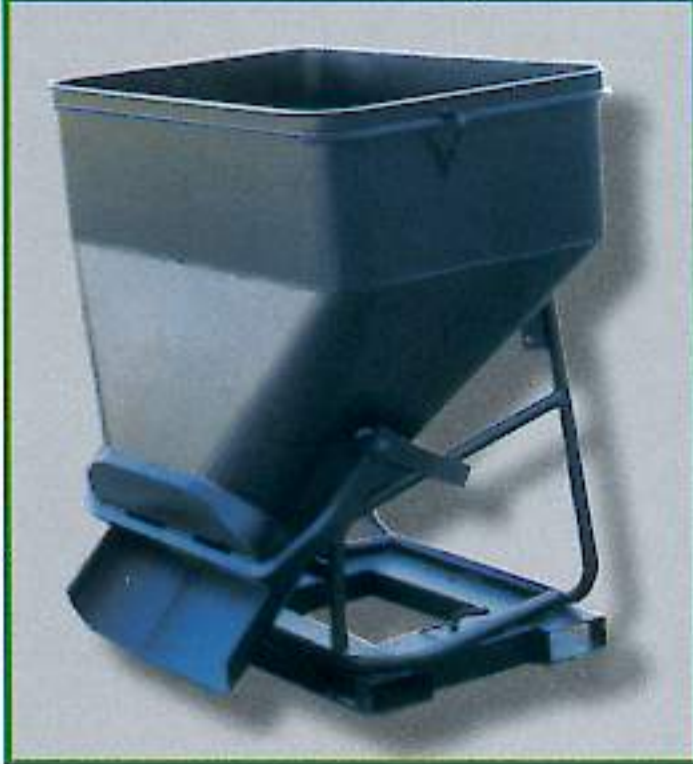
OPTIONS

- Cab mounted working lights
- Rear differential lock
- Prearrangement for attachments requiring two hydraulic services (es. concrete mixer)
- Air conditioning
- Tyres 18-19.5 16 PR semi-industrial profile



An enormous range of interchangeable attachments and options increase the versatility and performance of the PANORAMIC K handlers

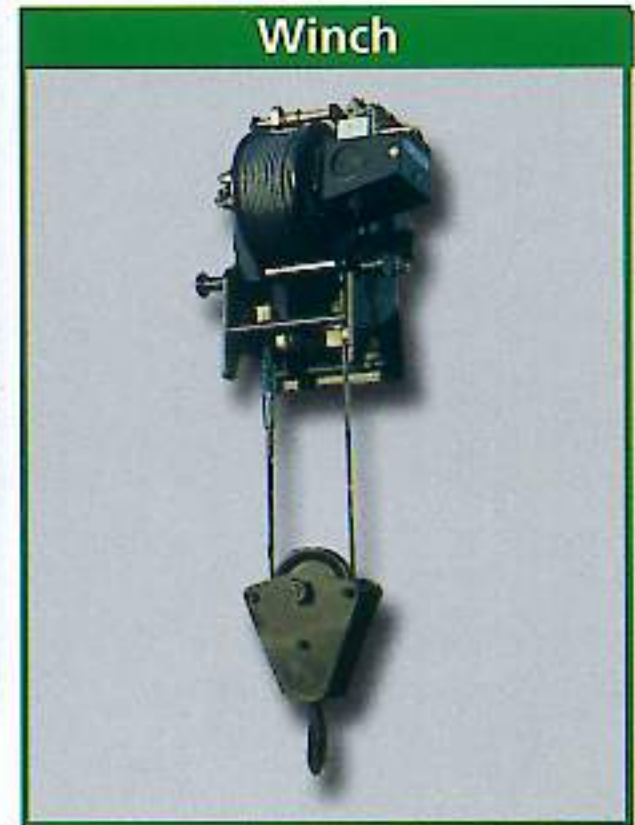
Concrete skip



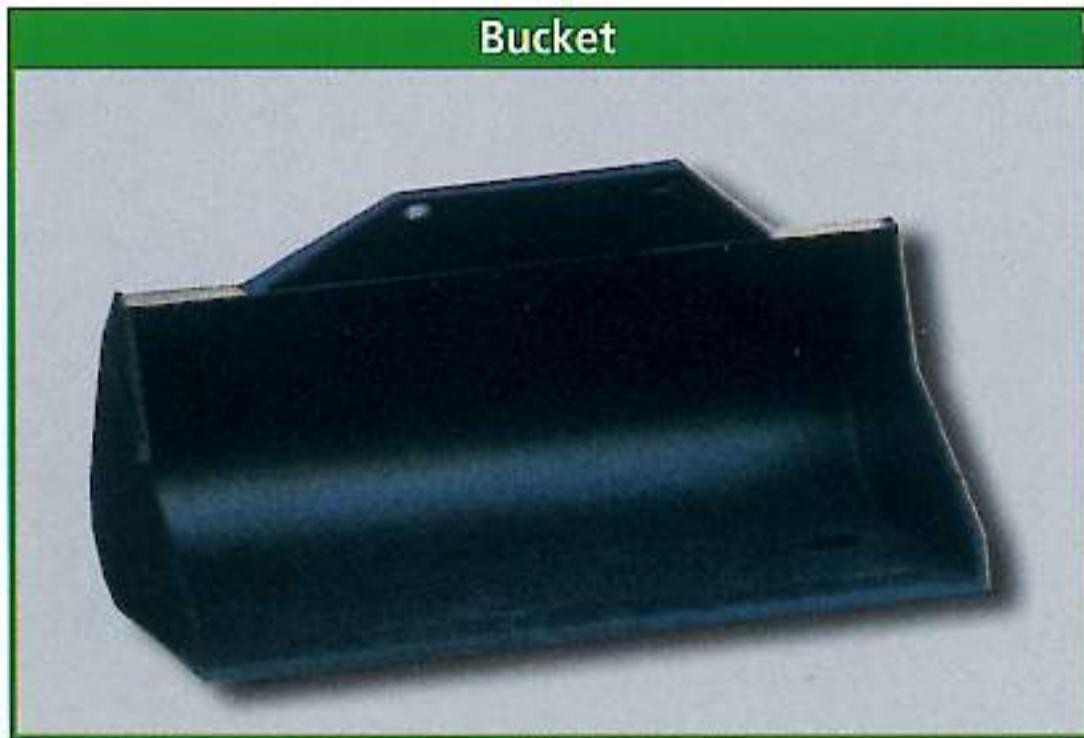
Concrete mixer



Winch



Bucket



Jib with winch



MERLO

MERLO SPA INDUSTRIA METALMECCANICA

12020 S. Defendente di Cervasca (CN) - Italy

Tel. +39 0171 614111 - Fax +39 0171 614100

www.merlo.com - info@merlo.com



MERLO FRANCE
info@merlo-france.fr



MERLO UK
info@merlo.co.uk



MERLO DEUTSCHLAND
info@merlo.de



MERLO IBERICA
servicios_generales@merlo-iberica.es